



**10 Fawdon Close**  
Red House Farm



10 Fawdon Close, Red House Farm, Newcastle Upon Tyne NE3 2AH

Guide Price £365,000

A fabulous, five bedroom detached house, located on this leafy residential road near Red House Farm in Gosforth, with a large patterned tarmac driveway, double length garage and landscaped gardens with an open aspect over the small paddock and field towards the A1. The superb family home, lived in by the current owners for 33 years, has been extended with a beautiful Orangery to the side elevation and a portico entrance and cover added to the front elevation and garage.

Reception hallway with large storage cupboard | Ground floor wc | Excellent L-shaped sitting/dining room with doors opening to the Orangery | Orangery overlooking the garden | Galley style kitchen/breakfast room | Utility room | First floor landing | Master bedroom | Ensuite bathroom/wc with bath and separate shower | Three further bedrooms | Single bedroom/craft room | Family bathroom/wc.

The house occupies a lovely garden plot of approx. 0.17 acres with a sunny west facing side aspect, paved terraced seating areas, raised planted beds, a timber store/kennel and a lawned garden to the side with a separate gated driveway, ideal for a caravan or camper van.

Fawdon Close is a quiet road leading to a small cul de sac of similar detached family homes near Stable Lane and Red House Farm. The house, one of two individual houses, is not overlooked and has an open aspect to the rear, and is ideally located for easy access to the A1, Gosforth and Kingston Park. The Northumbrian Piper pub is within minutes walking distance, as are the local nearby shops and public transport links to Gosforth and Newcastle city centre.

Services: Mains electric, gas, water and drainage | Tenure: Freehold | Council Tax: Band E |  
Energy Performance Certificate: Rating D



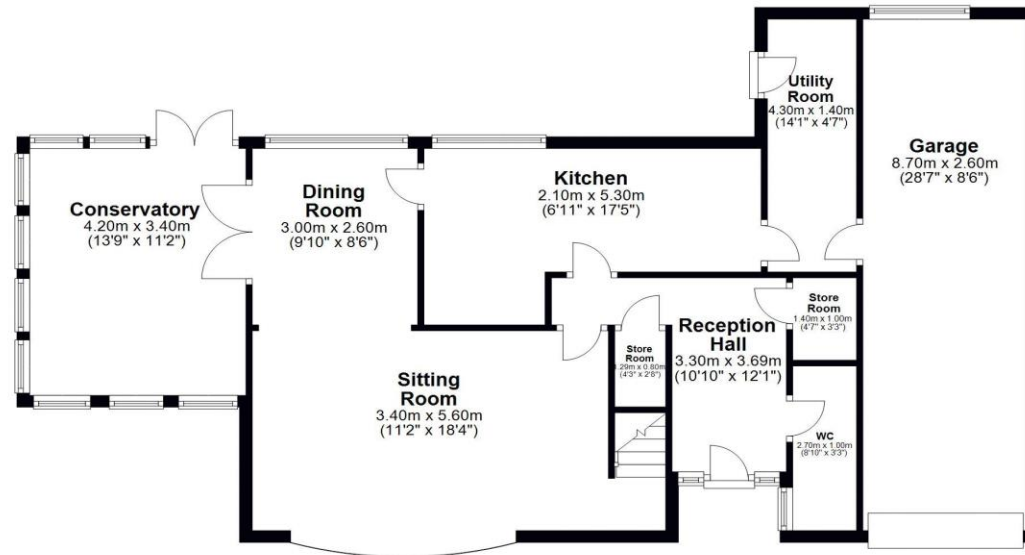






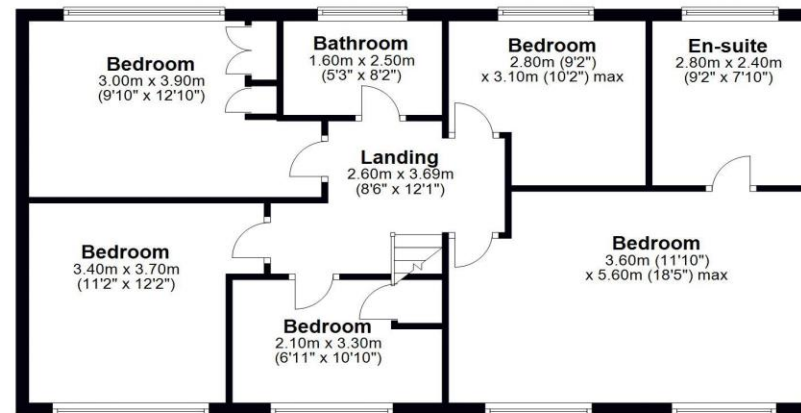
### Ground Floor

Approx. 101.4 sq. metres (1090.9 sq. feet)



### First Floor

Approx. 79.2 sq. metres (852.2 sq. feet)



Total area: approx. 180.5 sq. metres (1943.1 sq. feet)

**10 FAWDON CLOSE, NEWCASTLE UPON TYNE**



All enquiries to our Gosforth Office | 95 High Street, Gosforth, Newcastle upon Tyne NE3 4AA

T: 0191 213 0033 | [www.sandersonyoung.co.uk](http://www.sandersonyoung.co.uk)

